

LAND AVAILABLE

# CIRCLEPORT IV

TURFWAY ROAD & OLYPMIC BOULEVARD  
ERLANGER, KY 41018

ZONING: BUSINESS PARK 1

**6.4 & 9.7 ACRES**



## PROPERTY HIGHLIGHTS

- Join Sterling Cut Glass in the CirclePort International Business Park
- 2 miles from the Cincinnati/Northern Kentucky International Airport
- Serene business park setting with mature trees
- Utilities at site

## IDEAL USES

- Medical
- Office
- Corporate HQ
- R&D
- Service
- Light Manufacturing
- High-Tech Processing
- Multi-Family Residential

**BRETT LOWERY**

859.292.5548 office 937.974.5631 cell [blowery@corporex.com](mailto:blowery@corporex.com)

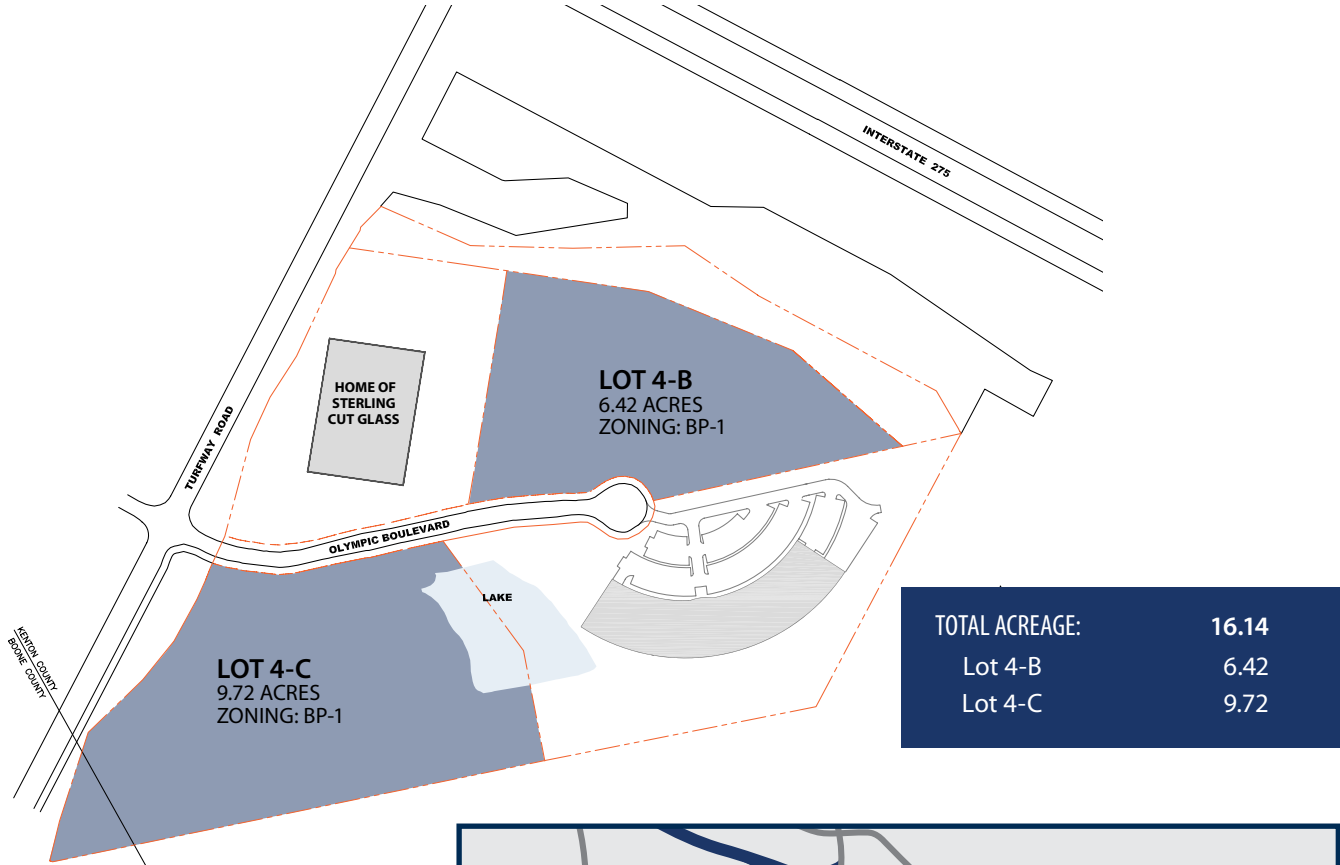
[www.corporex.com](http://www.corporex.com)

**Corporex**  
CELEBRATING 50 YEARS

# LAND AVAILABLE

## CIRCLEPORT IV

TURFWAY ROAD & OLYMPIC BOULEVARD  
ERLANGER, KY 41018



**BRETT LOWERY**  
859.292.5548 office 937.974.5631 cell [blowery@corporex.com](mailto:blowery@corporex.com)  
[www.corporex.com](http://www.corporex.com)

