

## LAND AVAILABLE

# VULCAN DRIVE

ERLANGER, KY 41014

ZONING: INDUSTRIAL PARK

## 11.1–28.2 ACRES



### PROPERTY HIGHLIGHTS

- Join L'OREAL USA, Regal Power Transmission Solutions, and Graham Packaging
- Lot 3 is pad-ready
- Lot 4 has rail access
- Utilities at the Site

### IDEAL USES

- Distribution
- Assembly
- Manufacturing
- Fulfillment
- Packaging

#### BRETT LOWERY

859.292.5548 office 937.974.5631 cell  
blowery@corporex.com

[www.corporex.com](http://www.corporex.com)

#### TREVOR WELLBROCK

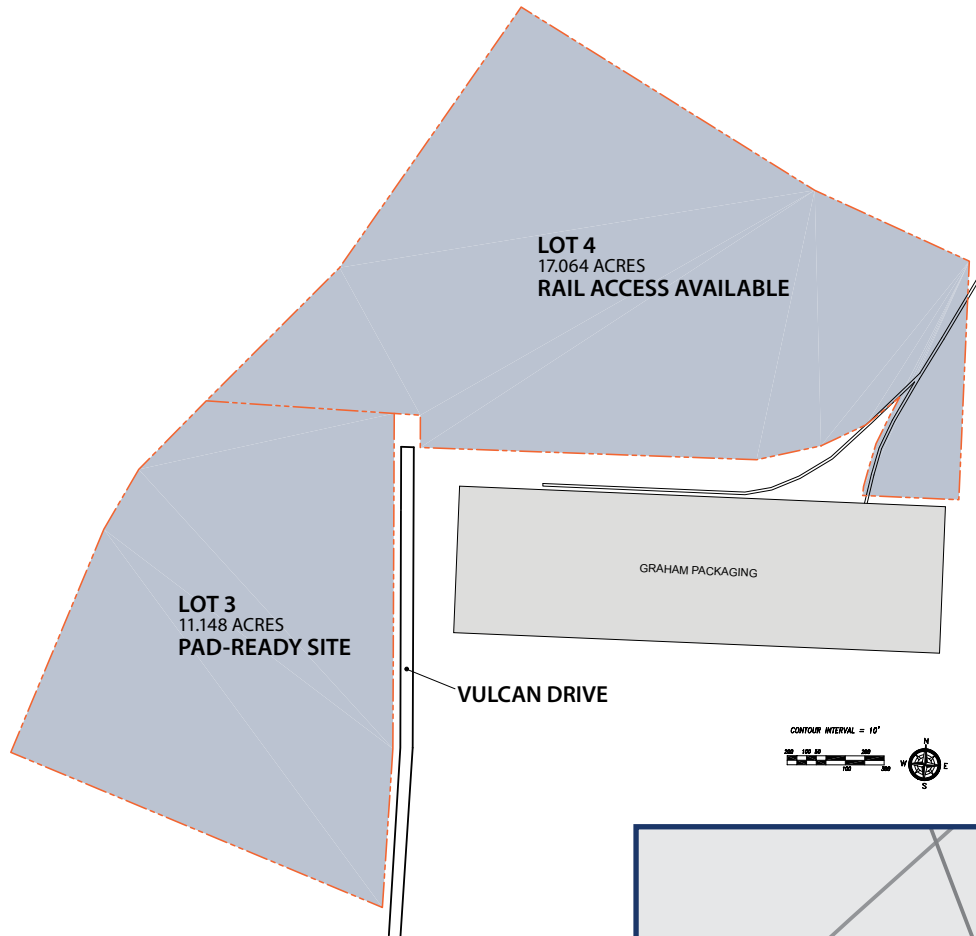
859.292.5583 office 859.803.5743 cell  
twellbrock@corporex.com



# LAND AVAILABLE

## VULCAN DRIVE

ERLANGER, KY 41014



|                |        |
|----------------|--------|
| TOTAL ACREAGE: | 28.212 |
| Lot 3          | 11.148 |
| Lot 4          | 17.064 |



**BRETT LOWERY**  
859.292.5548 office 937.974.5631 cell  
blowery@corporex.com  
[www.corporex.com](http://www.corporex.com)

**TREVOR WELLBROCK**  
859.292.5583 office 859.803.5743 cell  
twellbrock@corporex.com

