

## LAND AVAILABLE

# VULCAN DRIVE

ERLANGER, KY 41014

ZONING: INDUSTRIAL PARK

## 11.1–28.2 ACRES



### PROPERTY HIGHLIGHTS

- Join L'OREAL USA, Regal Power Transmission Solutions, and Graham Packaging
- Lot 3 is pad-ready
- Lot 4 has rail access
- Utilities at the Site

### IDEAL USES

- Distribution
- Assembly
- Manufacturing
- Fulfillment
- Packaging

#### BRETT LOWERY

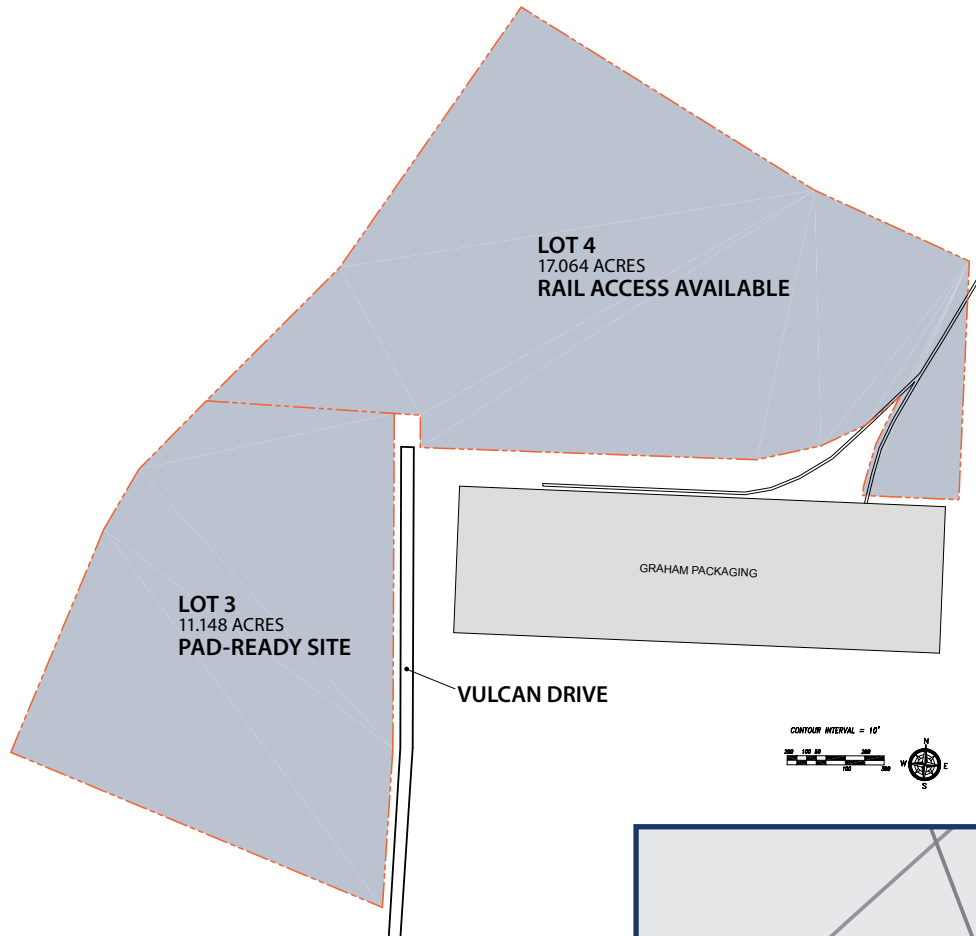
859.292.5548 office 937.974.5631 cell  
blowery@corporex.com

[www.corporex.com](http://www.corporex.com)

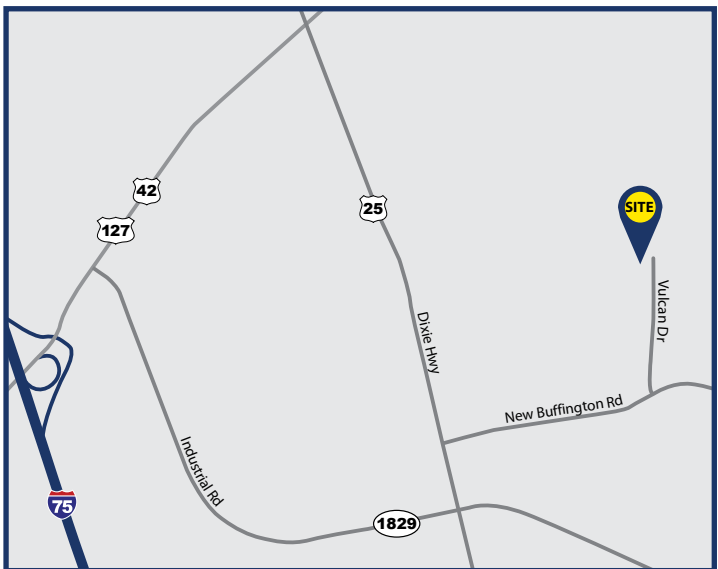


# LAND AVAILABLE

## VULCAN DRIVE ERLANGER, KY 41014



TOTAL ACREAGE:	28.212
Lot 3	11.148
Lot 4	17.064



**BRETT LOWERY**  
859.292.5548 office 937.974.5631 cell  
blowery@corporex.com  
www.corporex.com

