

LAND AVAILABLE

VULCAN DRIVE

ERLANGER, KY 41014

ZONING: INDUSTRIAL PARK

11.1–28.2 ACRES



PROPERTY HIGHLIGHTS

- Join L'OREAL USA, Regal Power Transmission Solutions, and Graham Packaging
- Lot 3 is pad-ready
- Lot 4 has rail access
- Utilities at the Site

IDEAL USES

- Distribution
- Assembly
- Manufacturing
- Fulfillment
- Packaging

BRETT LOWERY

859.292.5548 office 937.974.5631 cell
blowery@corporex.com

www.corporex.com

ALEX BIRDSALL

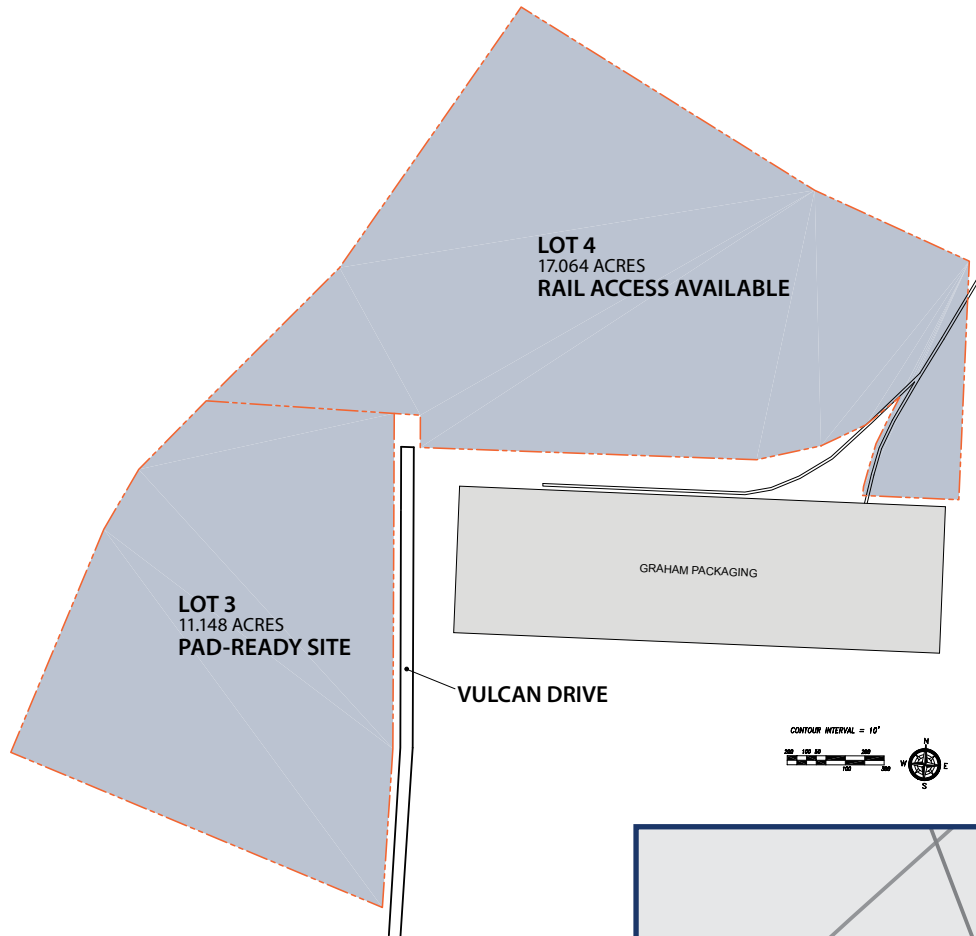
859.292.5557 office 513.252.8917 cell
abirdsall@corporex.com



LAND AVAILABLE

VULCAN DRIVE

ERLANGER, KY 41014



TOTAL ACREAGE:	28.212
Lot 3	11.148
Lot 4	17.064



BRETT LOWERY
859.292.5548 office 937.974.5631 cell
blowery@corporex.com
www.corporex.com

ALEX BIRDSALL
859.292.5557 office 513.252.8917 cell
abirdsall@corporex.com

