

## LAND AVAILABLE

# CIRCLEPORT II

TURFWAY ROAD & PACIFIC AVENUE  
ERLANGER, KY 41014

ZONING: BUSINESS PARK 1

**3.15–100 ACRES**



### PROPERTY HIGHLIGHTS

- Join ADM, Sterling Cut Glass, St. Elizabeth Healthcare and more in the CirclePort International Business Park
- Sites have interstate visibility
- Serene business park setting with mature trees and phenomenal views of the valley
- Utilities at the site

### IDEAL USES

- Medical
- Office
- Corporate HQ
- R&D
- Service
- Call Center
- High-tech
- Processing
- Light Manufacturing

#### BRETT LOWERY

859.292.5548 office 937.974.5631 cell  
blowery@corporex.com

[www.corporex.com](http://www.corporex.com)

#### TREVOR WELLBROCK

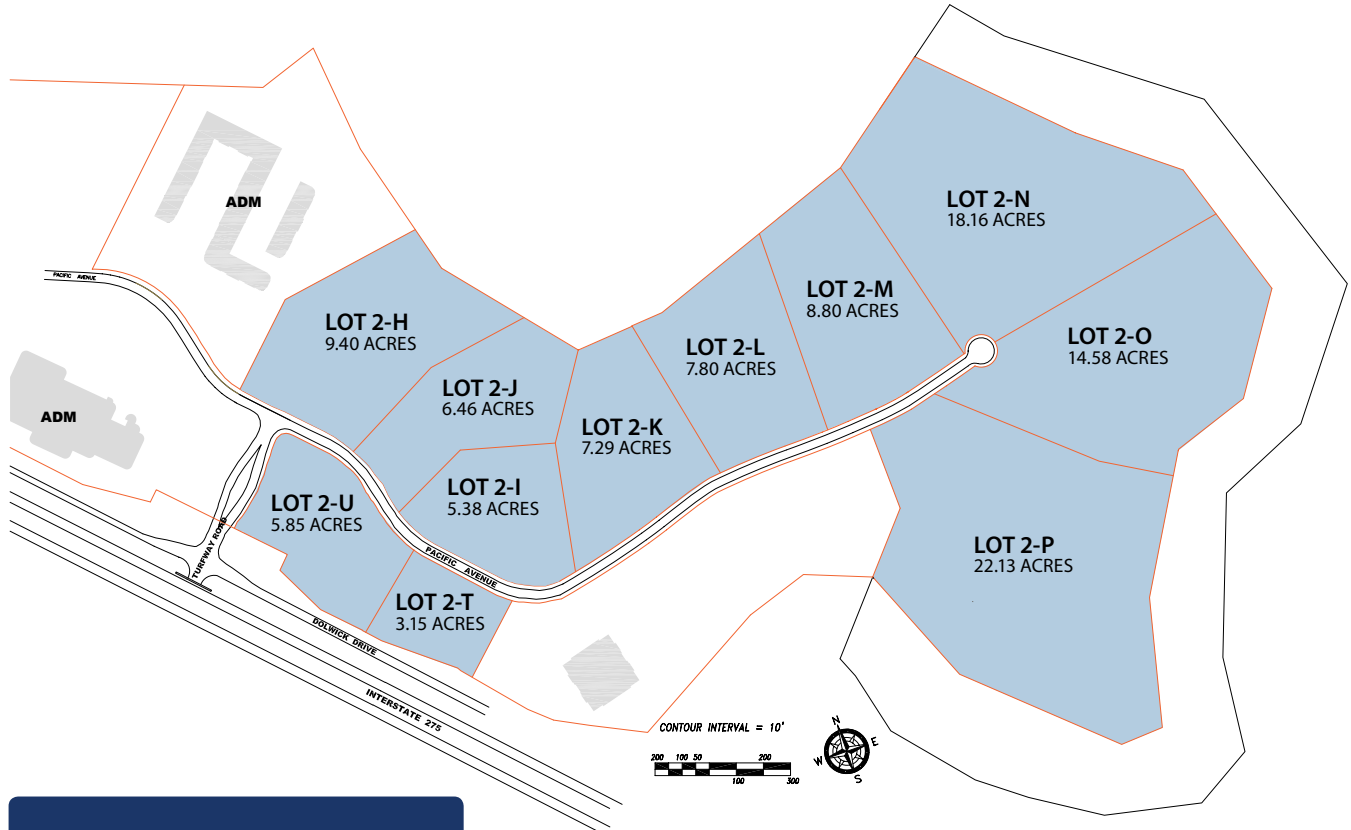
859.292.5583 office 859.803.5743 cell  
twellbrock@corporex.com



# LAND AVAILABLE

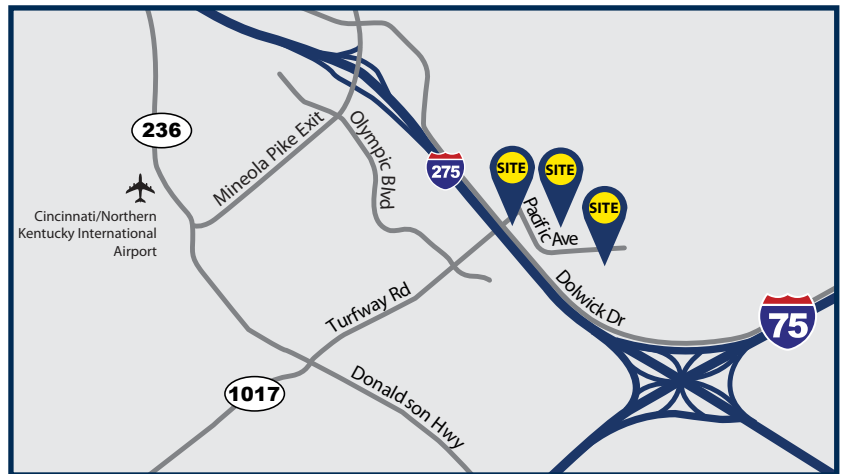
## CIRCLEPORT II

TURFWAY ROAD & PACIFIC AVENUE  
ERLANGER, KY 41014



TOTAL ACREAGE: **109.00**

Lot 2-H	9.40
Lot 2-I	5.38
Lot 2-J	6.46
Lot 2-K	7.29
Lot 2-L	7.80
Lot 2-M	8.80
Lot 2-N	18.16
Lot 2-O	14.58
Lot 2-P	22.13
Lot 2-T	3.15
Lot 2-U	5.85



### BRETT LOWERY

859.292.5548 office 937.974.5631 cell  
blowery@corporex.com

[www.corporex.com](http://www.corporex.com)

### TREVOR WELLBROCK

859.292.5583 office 859.803.5743 cell  
twellbrock@corporex.com

