

LAND AVAILABLE

CIRCLEPORT V

DOLWICK DRIVE
ERLANGER, KY 41018

ZONING: BUSINESS PARK 1

27.02 ACRES



PROPERTY HIGHLIGHTS

- Outstanding highway signage potential
- Highly visible sites, parallel to the I-75/I-275 interchange
- Over 200,000 cars a day pass the site
- Approximately 3 miles from the Cincinnati/Northern Kentucky International Airport
- 12 miles to Downtown Cincinnati
- Utilities at the site

IDEAL USES

- Corporate HQ
- Healthcare
- Office
- Multi-Family Residential
- High-Tech

BRETT LOWERY

859.292.5548 office 937.974.5631 cell
blowery@corporex.com

www.corporex.com

TREVOR WELLBROCK

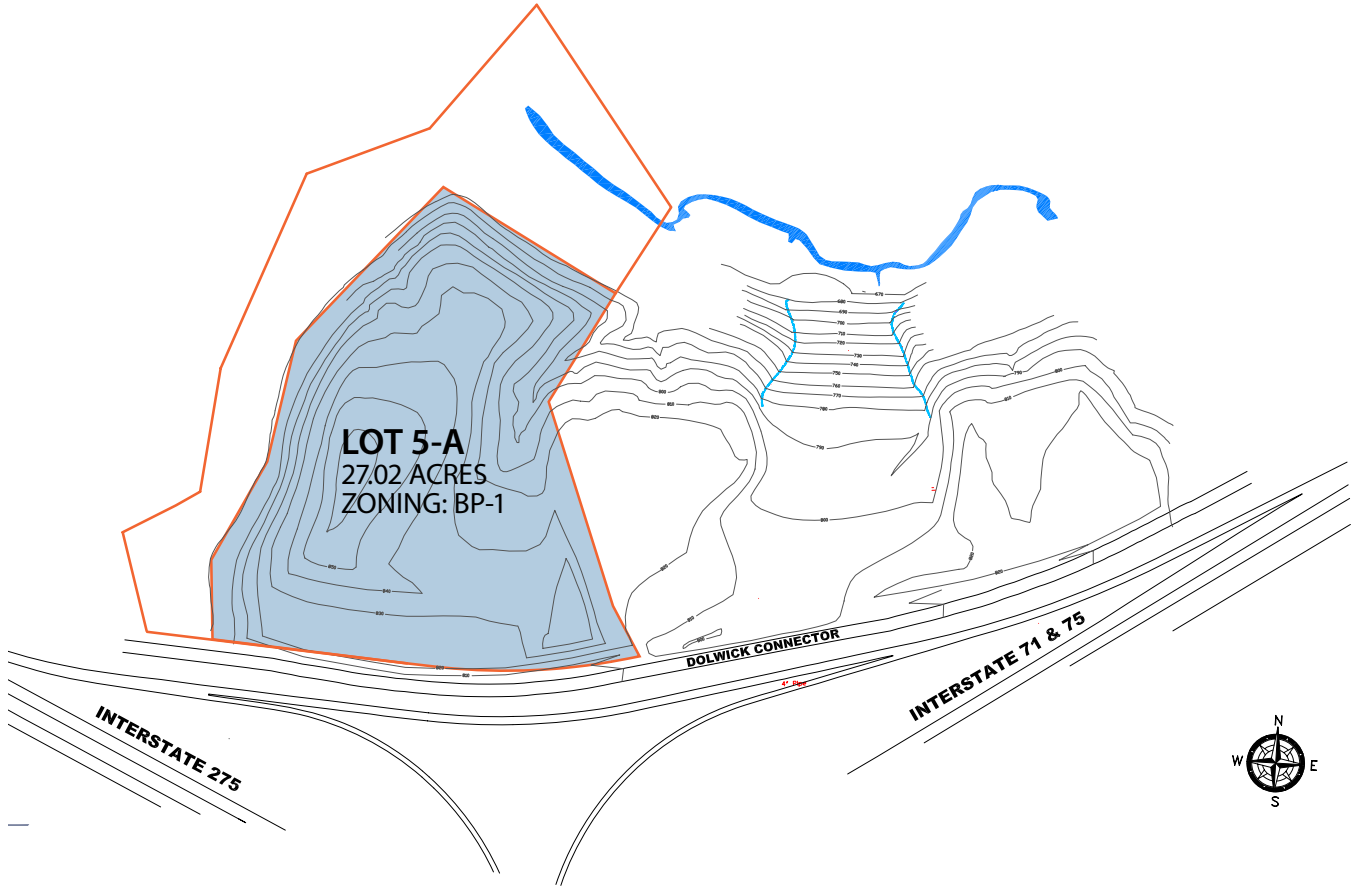
859.292.5583 office 859.803.5743 cell
twellbrock@corporex.com



LAND AVAILABLE

CIRCLEPORT V

DOLWICK DRIVE
ERLANGER, KY 41018



BRETT LOWERY

859.292.5548 office 937.974.5631 cell
blowery@corporex.com

www.corporex.com

TREVOR WELLBROCK

859.292.5583 office 859.803.5743 cell
twellbrock@corporex.com

