

LAND AVAILABLE

CIRCLEPORT V

DOLWICK DRIVE
ERLANGER, KY 41018

ZONING: BUSINESS PARK 1

15.5–40.4 ACRES



PROPERTY HIGHLIGHTS

- Outstanding highway signage potential
- Highly visible sites, parallel to the I-75/I-275 interchange
- Over 200,000 cars a day pass the site
- Approximately 3 miles from the Cincinnati/Northern Kentucky International Airport
- 12 miles to Downtown Cincinnati
- Utilities at the site

IDEAL USES

- Corporate HQ
- Healthcare
- Office
- Multi-Family Residential
- High-Tech

BRETT LOWERY

859.292.5548 office 937.974.5631 cell blowery@corporex.com

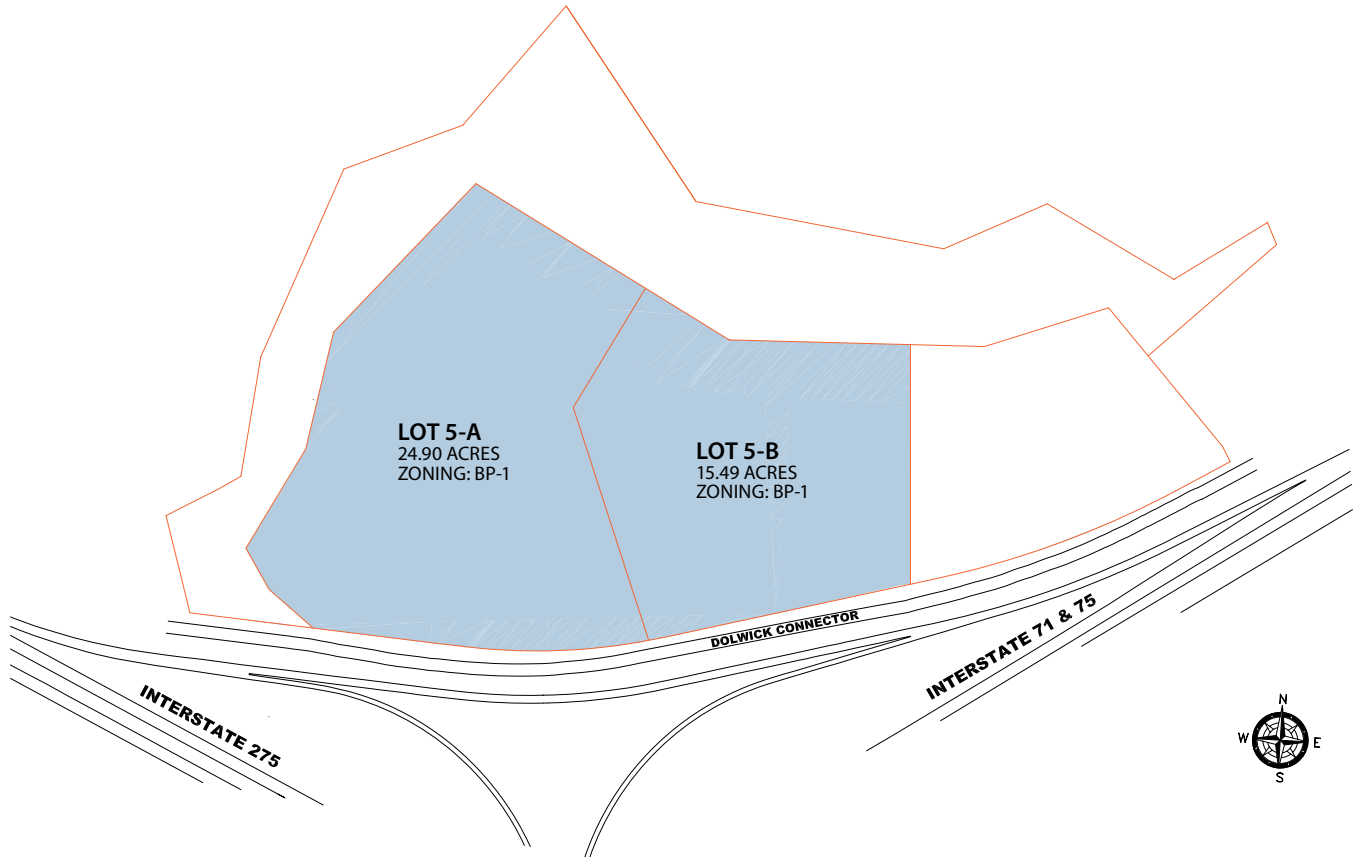
www.corporex.com

Corporex
CELEBRATING 50 YEARS

LAND AVAILABLE

CIRCLEPORT V

DOLWICK DRIVE
ERLANGER, KY 41018



TOTAL ACREAGE:	40.39
Lot 5-A	24.90
Lot 5-B	15.49



BRETT LOWERY
859.292.5548 office 937.974.5631 cell blowery@corporex.com
www.corporex.com

