

LAND AVAILABLE

CIRCLEPORT I & VI

MINEOLA PIKE & OLYMPIC BOULEVARD
HEBRON, KY 41048

ZONING: INDUSTRIAL 1/ PD

4-19 ACRES



PROPERTY HIGHLIGHTS

- Sites available ranging from 4 to 19 acres in Boone County
- Located at the Mineola Pike exit I-275, in Circleport Business Park
- 3 miles from the Greater Cincinnati/Northern Kentucky International Airport and 12 miles from Downtown Cincinnati
- Amenities: restaurants, hotels, high-tech training center

IDEAL USES

- Office
- Manufacturing
- Distribution
- Fulfillment
- Assembly
- Packaging

BRETT LOWERY

859.292.5548 office 937.974.5631 cell
blowery@corporex.com

www.corporex.com

TREVOR WELLBROCK

859.292.5583 office 859.803.5743 cell
twellbrock@corporex.com

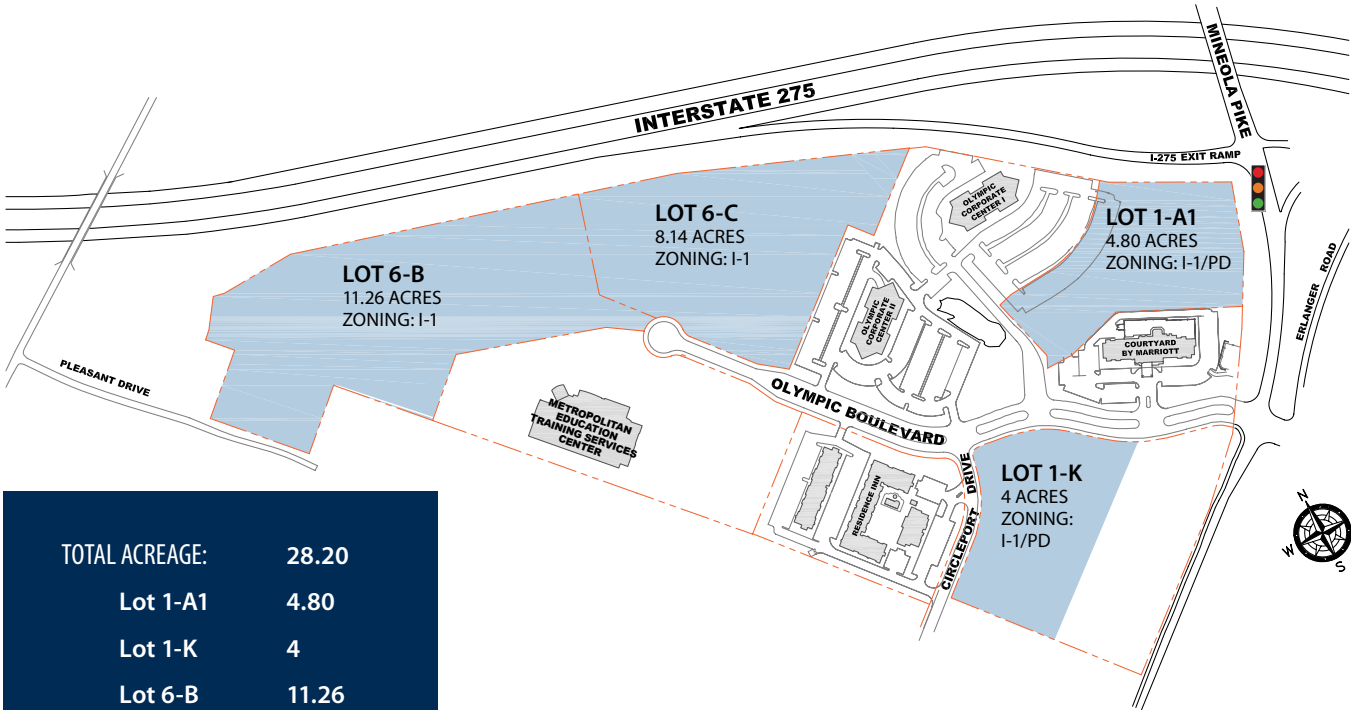


LAND AVAILABLE

CIRCLEPORT I & VI

MINEOLA PIKE & OLYMPIC BOULEVARD

HEBRON, KY 41048



TOTAL ACREAGE:	28.20
Lot 1-A1	4.80
Lot 1-K	4
Lot 6-B	11.26
Lot 6-C	8.14



BRETT LOWERY
859.292.5548 office 937.974.5631 cell
blowery@corporex.com
www.corporex.com

TREVOR WELLBROCK
859.292.5583 office 859.803.5743 cell
twellbrock@corporex.com

